

# VIC

**2025 Q2**

POSTCODES REPORT

Australian Solar Install Statistics and Insights

*Statistics based on systems 100 kW and less*

Victoria

# INSTALLS LEADERBOARD



	Postcode	Volume	No of Systems
1	3978	2,002	266
2	3030	1,878	206
3	3977	1,384	162
4	3336	1,125	155
5	3024	1,047	136
6	3429	1,042	136
7	3750	1,039	120
8	3350	992	130
9	3806	867	110
10	3023	807	90



# Your Residential Finance Partner

0.54% interest rate for residential

(7.79% comparison rate\*)

[Learn More](#)

\*Comparison Rates based on \$30,000 green loan repaid over 60 months. WARNING: This comparison rate is true only for the example given and may not include all fees and charges. Different terms, fees or other loan amounts might result in a different comparison rate.



Victoria

# GROWTH LEADERBOARD



	Postcode	Volume	No of Systems	Variation
1	3820	640	56	30.26%
2	3630	530	50	-10.97%
3	3020	659	54	-16.24%
4	3750	1,039	120	-16.89%
5	3809	592	92	-17.32%
6	3978	2,002	266	-20.07%
7	3024	1,047	136	-20.37%
8	3550	669	80	-20.53%
9	3336	1,125	155	-23.82%
10	3064	3,028	363	-29.76%

*\*Based on a minimum installation of 500kW*

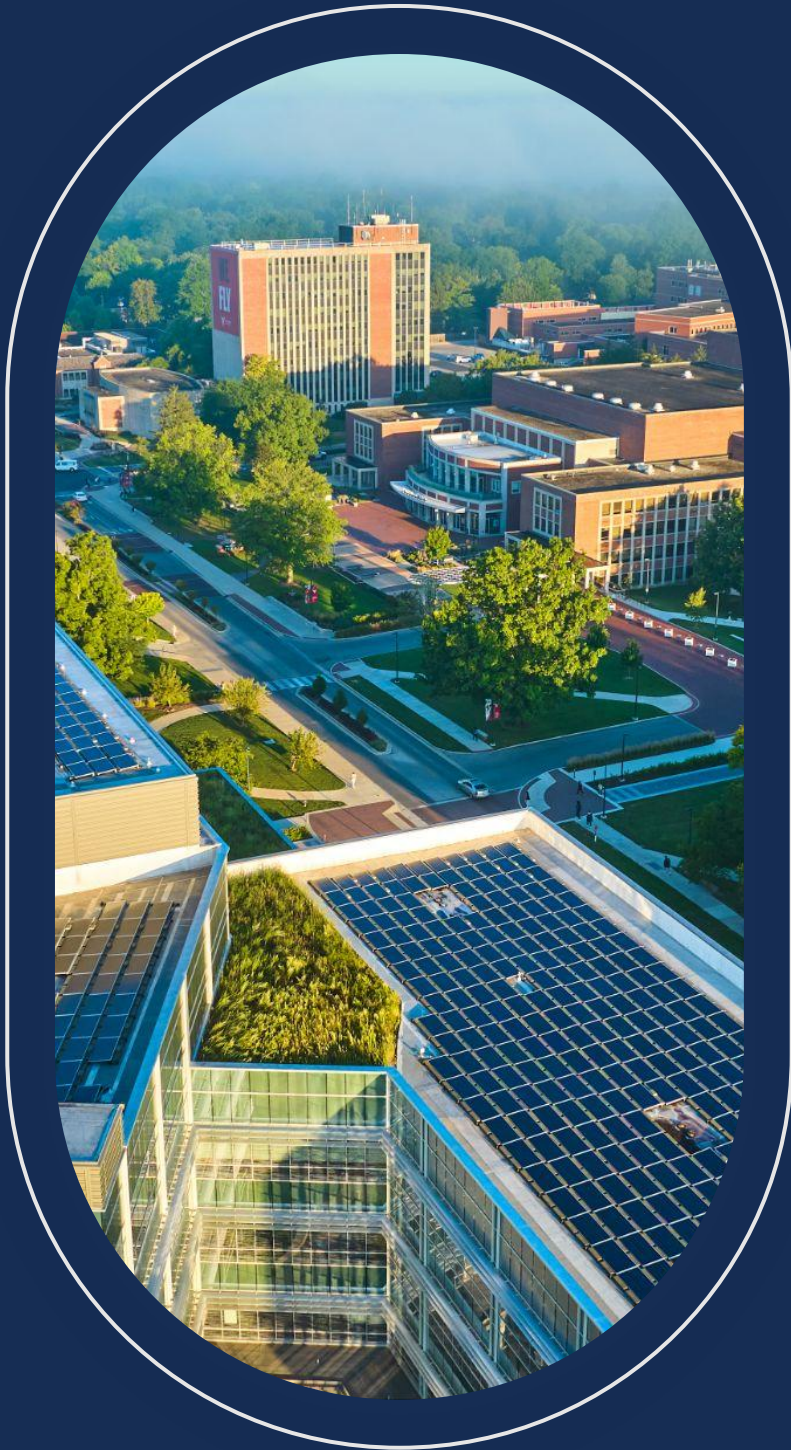




# Your Commercial Finance Partner

No financials approvals up to **\$300,000**

[Learn More](#)



Victoria

# DROP LEADERBOARD



	Postcode	Volume	No of Systems	Variation
1	3810	672	84	-53.35%
2	3977	1,384	162	-51.94%
3	3338	797	108	-48.35%
4	3754	728	87	-47.25%
5	3150	644	70	-46.19%
6	3030	1,878	206	-41.37%
7	3023	807	90	-39.91%
8	3335	653	77	-39.04%
9	3806	867	110	-38.29%
10	3500	617	54	-37.27%

*\*Based on a minimum installation of 500kW*



# AN IDEAL FINANCE PARTNER