

ACT

2025 Q2

POSTCODES REPORT

Australian Solar Install Statistics and Insights

Statistics based on systems 100 kW and less

Australian Capital Territory

INSTALLS LEADERBOARD



	Postcode	Volume	No of Systems
1	2611	1,091	95
2	2615	1,002	109
3	2913	796	70
4	2914	566	56
5	2905	415	40
6	2602	395	37
7	2614	374	29
8	2617	338	35
9	2904	328	26
10	2612	326	37



Your Residential Finance Partner

0.54% interest rate for residential

(7.79% comparison rate*)

[Learn More](#)

*Comparison Rates based on \$30,000 green loan repaid over 60 months. WARNING: This comparison rate is true only for the example given and may not include all fees and charges. Different terms, fees or other loan amounts might result in a different comparison rate.



Australian Capital Territory

GROWTH LEADERBOARD



	Postcode	Volume	No of Systems	Variation
1	2612	326	37	53.53%
2	2605	194	16	3.52%
3	2906	279	31	-1.61%
4	2904	328	26	-9.18%
5	2600	159	10	-22.37%
6	2614	374	29	-23.14%
7	2604	136	11	-26.43%
8	2902	246	27	-26.89%
9	2905	415	40	-28.25%
10	2611	1,091	95	-30.18%

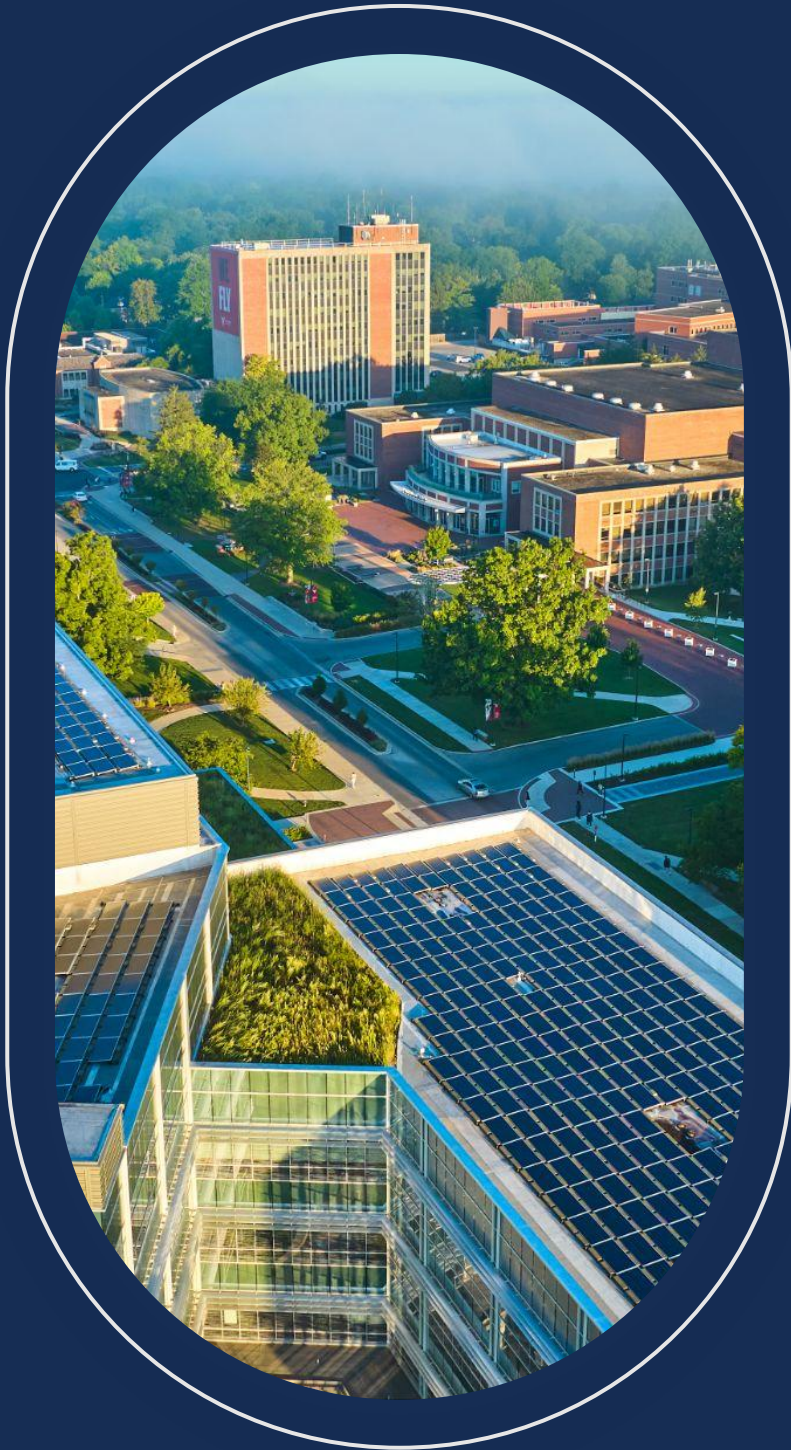
**Based on a minimum installation of 100kW*



Your Commercial Finance Partner

No financials approvals up to **\$300,000**

[Learn More](#)



Australian Capital Territory

DROP LEADERBOARD



	Postcode	Volume	No of Systems	Variation
1	2913	796	70	-52.94%
2	2903	111	12	-47.73%
3	2607	178	17	-44.69%
4	2606	162	12	-43.85%
5	2914	566	56	-42.66%
6	2602	395	37	-39.68%
7	2617	338	35	-34.71%
8	2603	177	12	-31.91%
9	2615	1,002	109	-30.51%
10	2611	1,091	95	-30.18%

**Based on a minimum installation of 100kW*



AN IDEAL FINANCE PARTNER